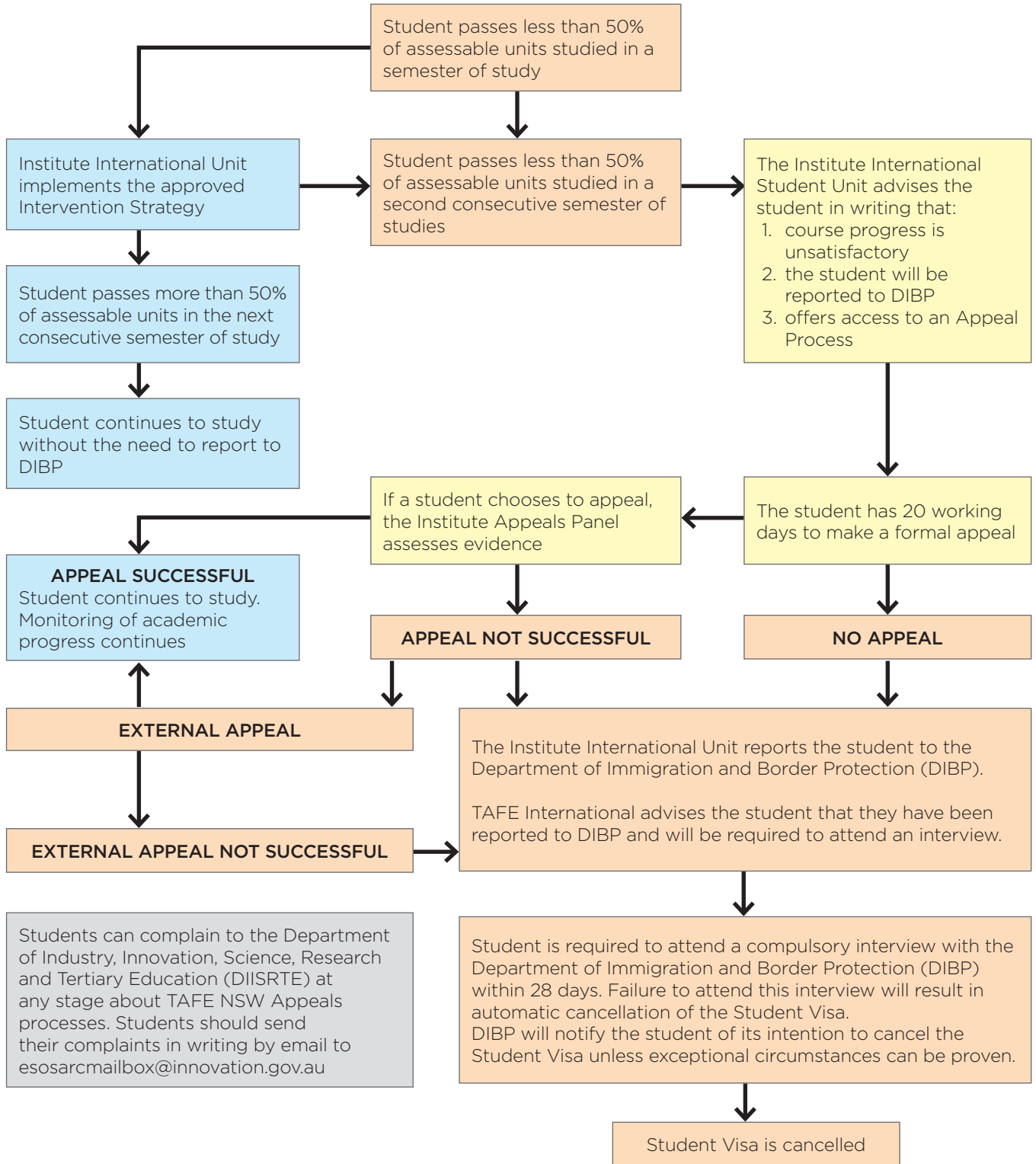


TAFE NSW Course Progress Policy Flowchart

International students must comply with course progress requirements in order to keep their Student Visas. This chart explains how the new processes will be implemented at your college.



Students can complain to the Department of Industry, Innovation, Science, Research and Tertiary Education (DIISRTE) at any stage about TAFE NSW Appeals processes. Students should send their complaints in writing by email to esosarcmailbox@innovation.gov.au